

EC600N 4G CAT1  
32mm\*30mm\*12.34mm  
EC600N LTE Cat 1  
10Mbps 5Mbps EC600N  
DFOTA  
2G 3G  
LTE " " Cat 1

EC600N

- 
- CAT 1
- 
- 
-

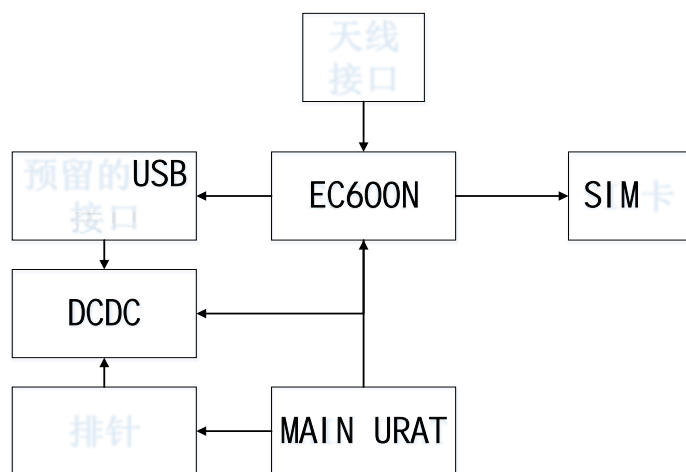
# EC600N

" "

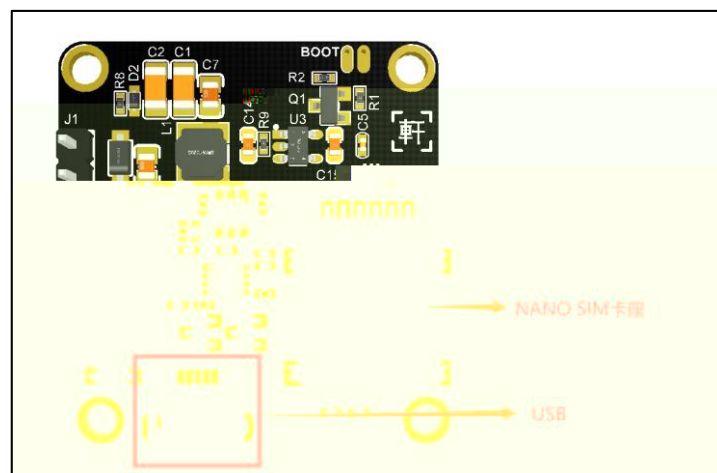
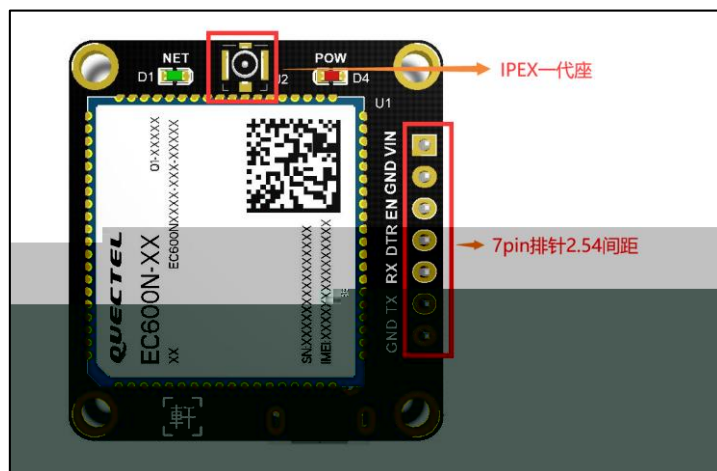
## 1 EC600N

	USB			
	5V			
	5V-16V			
	Cat 1 FDD TDD			
	1.4/3/5/10/15/20MHz			
LTE	MIMO			
	LTE-FDD	10Mbps	5Mbps	
	LTE-TDD	7.5Mbps	1Mbps	
	TCP/UDP/PPP/NTP/NITZ/FTP/HTTP/PING/CMUX/HTTPS/ FTPS/SSL/FILE/MQTT/MMS/SMTP/SMTPS PAP (Password Authentication Protocol) CHAP (Challenge Handshake Authentication Protocol)			
USIM	USIM /SIM	1.8V	3.0V	
	3.3V			
	USB2.0	480Mbps		
	AT			
USB	USB	Windows 7/8/8.1/10	Linux	
	2.6/3.x/4.1-4.14	Android 4.x/5.x/6.x/7.x/8.x/9.x	USB	
AT	3GPP TS 27.007	3GPP TS 27.005	AT	
	MAIN			
	50			
	32mm * 30mm * 12.34mm			
		-35	+75	
		-40	+85	
		-40	+90	

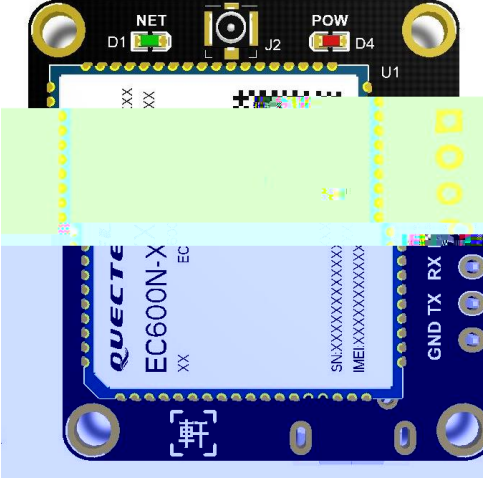
2



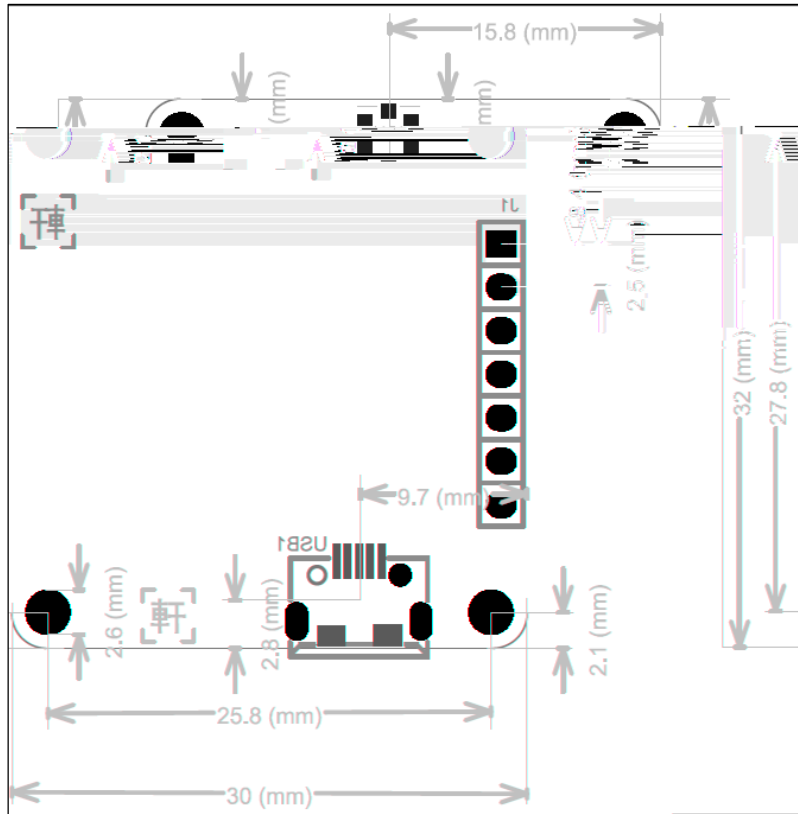
3



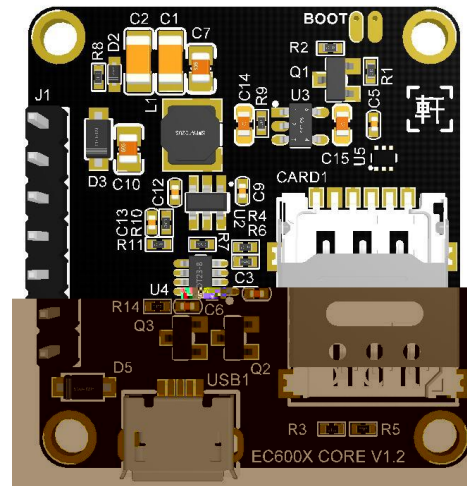
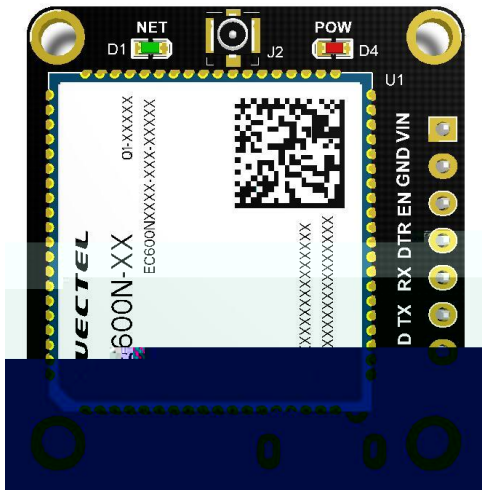
4

 <p>The diagram shows a Quectel EC600N-X module. The top part is a black PCB with components labeled NET, D1, J2, POW, and D4. A green rectangular area is overlaid on the top half of the module, and a blue rectangular area is overlaid on the bottom half. The blue area contains the text 'QUECTEL EC600N-X EC', 'SN:XXXXXXXXXXXX', 'IMEI:XXXXXXXXXXXX', and 'GND TX RX'. There are also two 'XX' labels on the left side of the blue area. The bottom part of the module is a blue PCB with four mounting holes and a QR code.</p>		

5



6



7



EC600N	EC600CNLC	1
LTE	4G	1